

GSEF WEBINAR SERIES

4TH ROUND

THE EVOLVING ECOSYSTEM OF SOCIAL AND SOLIDARITY ECONOMY IN THE POST COVID- 19 ERA

29 SEPTEMBER 2020



MEXICO CITY 2021
GLOBAL SOCIAL
ECONOMY FORUM

MODÉRATRICE



LAURENCE KWARK

SECRETARY GENERAL

**GLOBAL SOCIAL ECONOMY
FORUM(GSEF)**

English: Please choose "Off" in the channel 한국어: "Korean"를 선택하십시오.

INTRODUCTION

- This webinar is part of GSEF Webinar Series co-organized with the Local Organizing Committee of GSEF 2021 for preparing our **virtual forum October 2020**
- The series between May and July illustrates the major impacts of COVID-19 on SSE, our societies and economies, and the creative actions undertaken by local governments and SSE stakeholders in the fight against COVID-19.
- In this session, we will try to understand and discuss what are the possible forms of collaborative action and new-normal in different countries after the COVID-19 pandemic.

SPEAKERS



Dr. Carlos Zarco, Director-General, Espriu Foundation, Spain,
Director-General, Espriu Foundation, Spain

Rebecca Choy Yung, Chair, Hong Kong Social Enterprise Summit, Hong Kong



Derek Walker, CEO, the Wales Co-operative Centre, Wales

Dr. Ali Ercan Özgür, Co-founder, "İhtiyaç Haritası" (Needs Map), Turkey



Chris Dobrzanski, Board Chair, Community Forward Fund, Canada

Choi, Young Mi, Representative, Korea Domestic Worker's Association, South Korea



GET READY

Remarks of the seminar today

- 6 presentation (10 mins each) + 1 Q&A Session



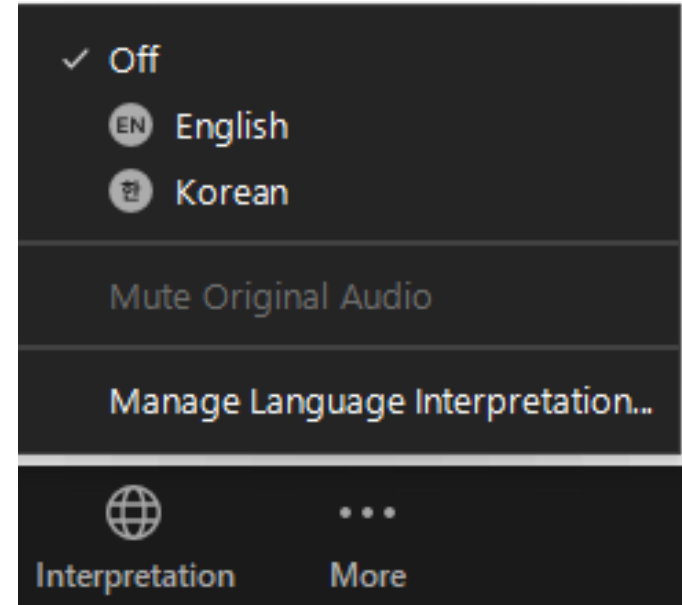
Please mute your video to avoid any background noise during the session

- Get engaged with others! You may leave your questions to the speakers in “Chat”



- The Powerpoint presentation will be available in GSEF website later: www.gsef-net.org

INTERPRETATION



- If the speaker is presenting in English, you can choose “Off” to listen to the original presentation in English
- If the speaker is speaking in Korean, you can choose “English” in the channel
- Please mute the original audio
- 연사가 한국어로 발표하는 경우에는, 통역 표시를 클릭하신 후에 끄기 off 버튼을 누르시면 연사의 발표를 바로 들으실 수 있습니다.
- 연사가 한국어 이외 언어 (영어,)로 발표하는 경우, 통역 표시에서 Korean 버튼을 누르시면 한국어 동시통역을 들으실 수 있습니다
- 원본 오디오 음소거 클릭해주세요

THE EVOLVING ECOSYSTEM OF SOCIAL AND SOLIDARITY ECONOMY IN THE POST COVID-19 ERA

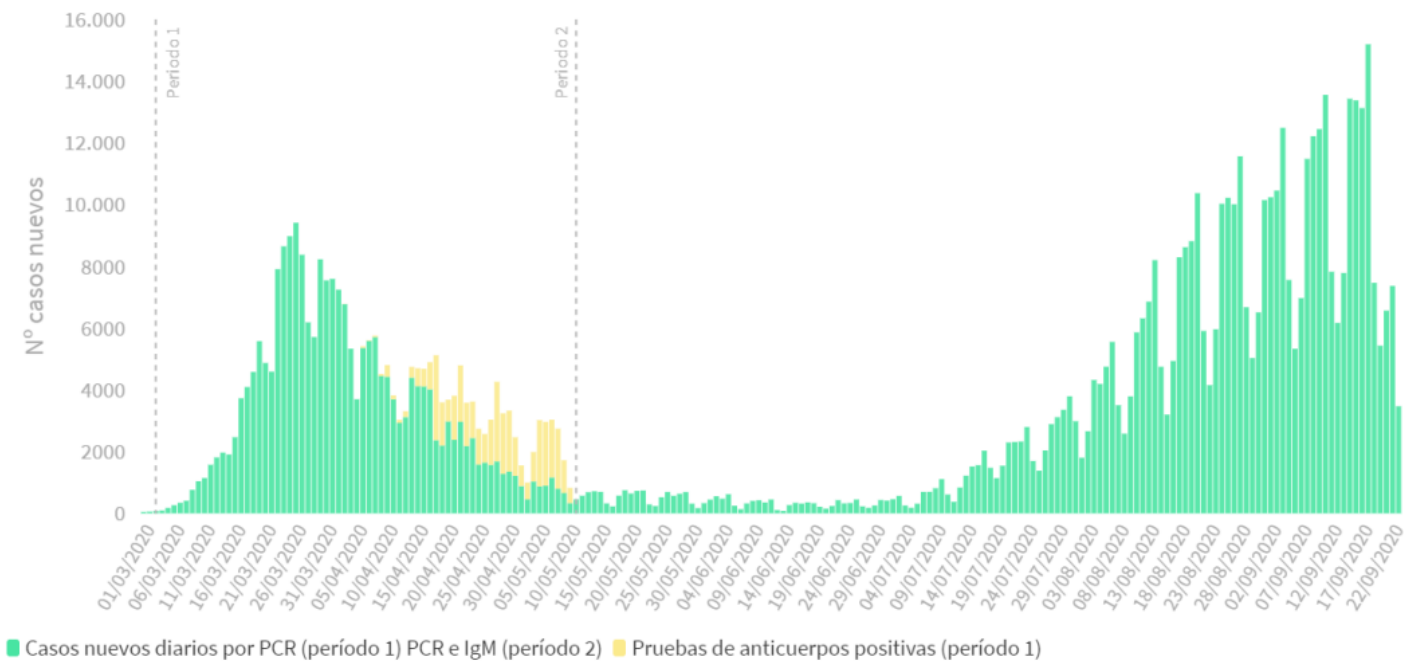


DR. CARLOS ZARCO

**DIRECTOR-GENERAL, ESPRIU FOUNDATION,
SPAIN, DIRECTOR-GENERAL, ESPRIU
FOUNDATION, SPAIN**

COVID-19 IN SPAIN

- 704,209 confirmed cases
- 146,407 admitted in hospitals
- 13,255 in Intensive Care Units
- 31,118 deads



Data as of 24 September 2020

ESPRIU OVERVIEW

- A network of health cooperatives currently caring for 2.6 million people
- 180,000 cooperators
- 6,182 direct employees
- More than 45,000 health professionals in partnership
- 16 hospitals, 32 multi-speciality medical centres
- In 2019
 - 13 million medical consultations
 - 419,000 surgeries
 - 540,000 emergency services
 - 1,6 billion euros of turnover

THE RESPONSE TO COVID-19

- We treated more than 12,000 covid-19 patients
- Full coordination with the public health system
- Hospitals restructured their facilities and postponed non-urgent interventions
- A new system of telemedicine was launched
- Non-health staff switch to remote working. No workforce reduction.
- Aid programs to help cooperative members and customers with financial issues
- Psychological support services for health workers in the front-line
- Information campaigns addressed to the population
- Solidarity fund to protect health workers and their families

CONTRIBUTION TO POST COVID ERA

- Cooperatives efficiently combines economic resources and healthcare workers skills
- Health cooperatives are ready to public-private partnerships
- Health cooperatives are sound businesses with a sustainable long-term perspective



The Evolving Ecosystem of Social and Solidarity Economy in the post COVID-19 era

Mrs Rebecca CHOY YUNG
Chair, Social Enterprise Summit
Hong Kong
29 September 2020

Impacts of 3rd wave of COVID-19 on SEs



30% SE's revenue dropped more than 50%

10% SEs earned 0 profit in the past half year

67% shorten opening hours

50% shorten working hours

25% cashflow can only survive for 3 mths

10% closed temporarily



Social Business Empowerment

- The Social Innovation and Entrepreneurship Development Fund (SIE Fund)
- The Anti-Epidemic Fund
- Social Financing: Community Resilience Fund



Community Resilience Fund (CRF)

Pilot Cohort 2nd Batch

Supporting Nomination Partners





Supported by corporates & donors, Ginko House distributed lunch boxes to 500-700 needy everyday.





1. Digital Innovation





2. Social Enterprises Innovation



3. Education Innovation





4. Business for Good

#lovewithoutborders

© NWD All Rights Reserved

Mask To Go Dispenser



GREEN BITCH

be a good girl to the earth

SAVE mudmudmud



8/JULY/2020
 12:00-8:00PM
 唔Grand Opening

尖沙咀
 利時438

SAUPEI
 MILMILL
 ONEYARN
 HYGINOVA
 HAPPERIOD
 DAYDAYSOAP
 GREEN PLATE
 BEESWAX CLOTH
 MADE IN SAMPLE
 SOAPER DELIGHTS
 COCONUT MATTER
 GOOD DAY SOCIETY
 ZERO WASTE KITCHEN HK
 LOOKMATTERS @ JUPVEAH
 and more.....

Recommendations on developing SSE activities post COVID

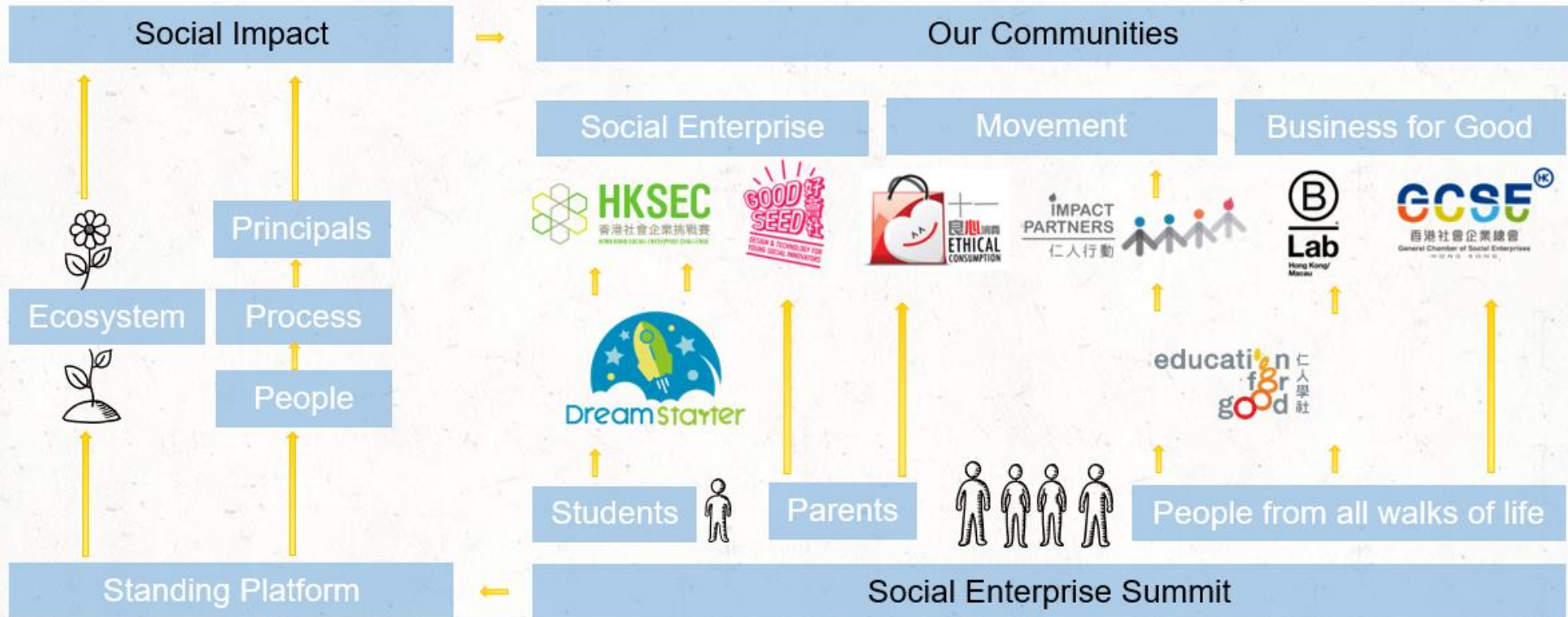


**Roles of platform organizations
and movement building**



Social Enterprise Summit

Recommendations on developing SSE activities post COVID



Recommendations on developing SSE activities post COVID

Models for the future :
from SE to B Corps



Recommendations on developing SSE activities post COVID



Developing social finance



Recommendations on developing SSE activities post COVID



**Cross-sector collaboration:
Civic, business, government &
education sectors**





社企民間高峰會
Social Enterprise Summit



凝聚力
collective power

新常態
new normal

International Symposium
19-21 November
(online)

新常態
new normal

Registration Now



凝聚力
collective power

<https://ses.org.hk/registration>

THE EVOLVING ECOSYSTEM OF SOCIAL AND SOLIDARITY ECONOMY IN THE POST COVID-19 ERA



Derek Walker

CEO

Wales Co-operative Centre



Wales Co-operative Centre
Canolfan Cydweithredol Cymru

English: Please choose "Off" in the channel 한국어: "Korean"를 선택하십시오.

INITIATIVES UNDERTAKEN TO STAY RESILIENT DURING COVID-19

- Good support schemes from UK and Welsh Governments, which included social enterprises
 - business support AND finance
- Impact is not yet clear but those with a greater proportion of trading income are hardest hit
- Social enterprises have shown their true colours by supporting people and communities in need during the pandemic
- Social enterprises have adjusted to continue to provide services and to survive e.g. embracing technology, staying in touch with clients, supporting employees
- Public bodies have looked to social enterprise sector for solutions e.g. PPE
- Information and case studies can be found [here](#)

BUILDING A NEW SOCIAL AND SOLIDARITY ECONOMY ECOSYSTEM AFTER THE COVID-19 PANDEMIC

- ‘Build Back Better’ or ‘Build Back Social’ are guiding slogans
- Launched a new vision and action plan called [Transforming Wales Through Social Enterprise](#)
 - Our vision is ‘Social enterprises at the heart of a fairer, more sustainable and more prosperous Wales’
- Particular emphasis on a green recovery and the opportunities that could bring
- Led by social enterprises, not Government
- The strategic is bringing cohesion, direction and momentum
- Impressive number of new start social enterprises in last six months

CHALLENGES DURING THE DEVELOPMENT OF THE NEW ECOSYSTEM

- Challenge is to go beyond individual initiatives to a completely different economic ecosystem
- Looming problem of unemployment encourages traditional approaches
- Lots of competing ideas – need to move to delivery
- Are social enterprises ready to seize the opportunities that might be available?
- Public funding is going to be very limited
- Low level of digital skills
- Staying connected and sharing ideas is more important than ever.

THE EVOLVING ECOSYSTEM OF SOCIAL AND SOLIDARITY ECONOMY IN THE POST COVID-19 ERA



Ali Ercan Özgür
Co-founder
Needs Map Coop

Ali Ercan Özgür completed his PhD at Marmara University's Local Governments and Decentralization Department. He is a graduate of Political Science and International Relations (Marmara University, Istanbul) and holds MSc Governance and Development Management degree (University of Birmingham, International Development Department, UK). He is British Foreign & Commonwealth Office Chevening Scholar and Marshall Memorial Fellow of German Marshall Fund of the United States.

Ali Ercan Özgür is co-founder of *Needs Map*, and partner of *IDEMA* and *INOGAR* cooperative.

ABOUT NEEDS MAP

Needs Map is an online **social platform cooperative**, where people in need of something can connect with those who can help them around the country.

Needs Map does **map-based** data matching based on in-kind transfers. **Online Collective Work** is a kind of revival neighborhood, cooperation, that brings together.

Needs Map brings **transparency** and **visualises** street level data in terms of need and support and makes it possible to act accordingly.

WHAT NEEDS MAP DO?



to learn and **verify the needs** on the basis of individuals and communities,

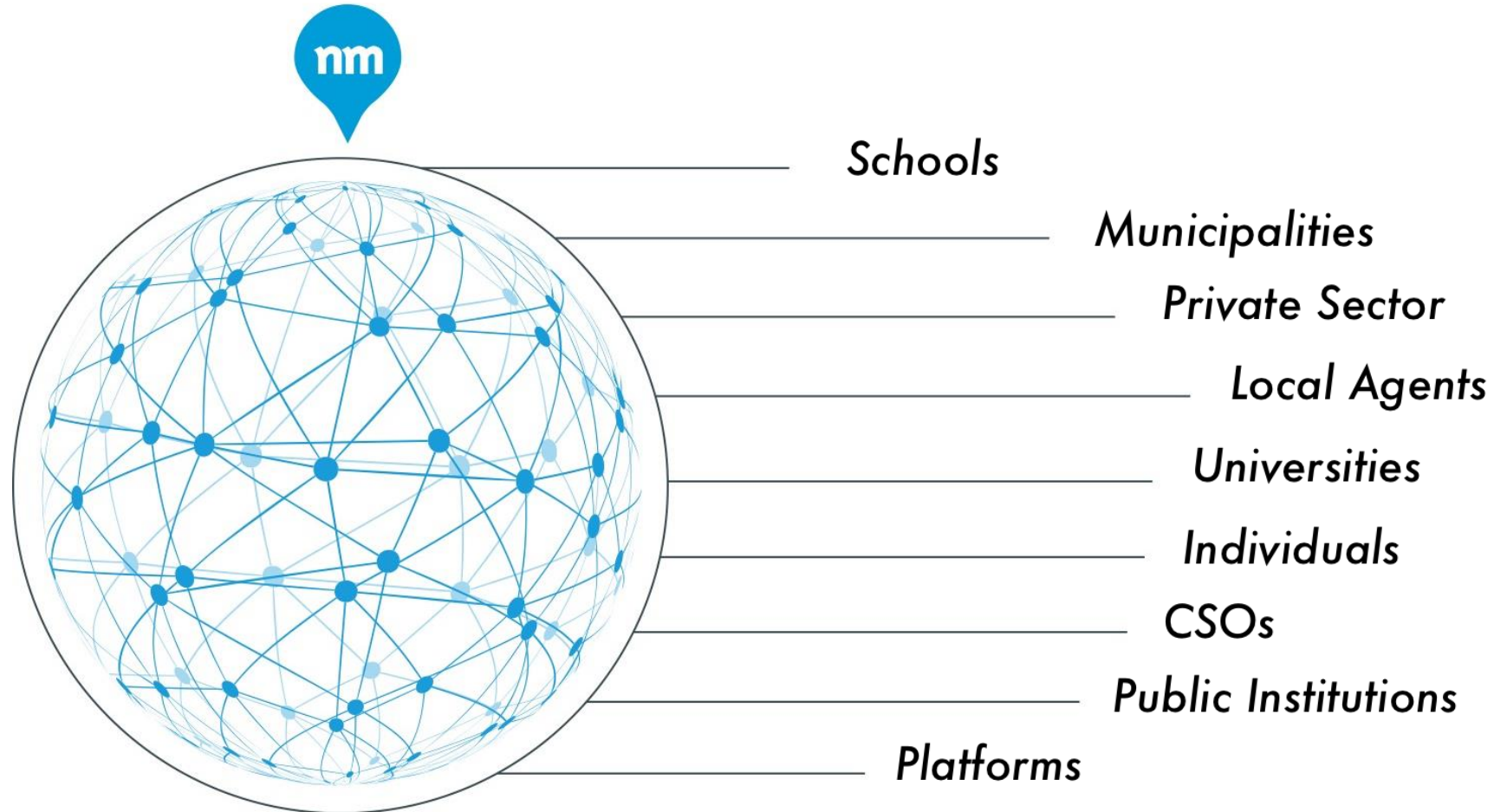


to **collect** and **list** them on a **map-based approach**,



to **facilitate the needs' meeting** by institutions, organizations or private individuals.

BENEFICIARIES



NEEDS MAP WITH NUMBERS

100k+
Member

350
Collaborations
with CSOs

48+
University Communities

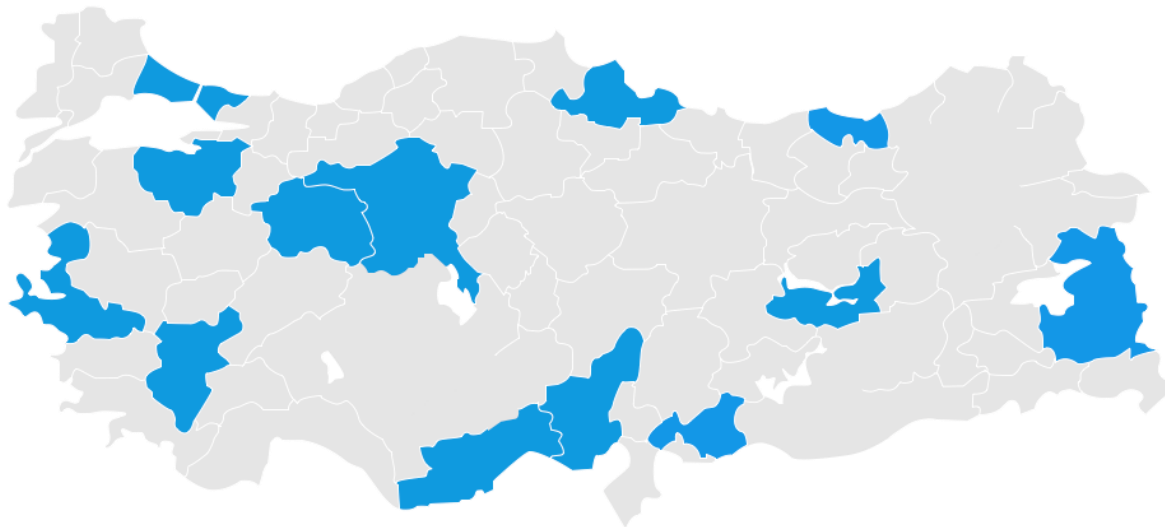
1.4milyon+
Matching of good that is
needed and supported

20 Million+
Dollars worth goods
have exchanged.

LOCAL BUSINESSES SUPPORT PROGRAM

Mastercard Impact Fund “**Local Businesses Support Program for Covid19 Response**” project will support;

- the local economy through a system (Social Marketplace Module).
- the local businesses, in a way that supporting their financial survival in the Covid19 outbreak.
- the vulnerable families’ basic needs (food and hygiene materials) from local businesses.
- the project will cover 20 provinces in Turkey.



LOCAL BUSINESSES SUPPORT PROGRAM

Mastercard Impact Fund “*Local Businesses Support Program for Covid19 Response*” project will achieve;

- At least **7.200** families (28.800 direct beneficiaries) that are negatively affected by the COVID-19 pandemic,
- At least **300** local SMEs / businesses that are economically affected by the COVID-19 pandemic,



Development of Social
Marketplace Module



Training Content and Field
Visits



Social Marketplace Launch
Event



FESTTOGETHER AT HOME

**FESTTOGETHER
EVDE 9 MAYIS**

ih
ihtiyaç haritası

COVID-19 SALGINI SONRASINDA ORTAYA ÇIKAN İHTİYAÇLARA DESTEK OLMAK AMACI İLE

#BİRLİKTE GÜZEL

Google YouTube İTOSLA netd Dogan

NIKE LES BENJAMINS iyzico Mobilet KAFA Radyo

UNDP Delegation of the European Union in Turkey nef vakfi tider

İSTANBUL KÜLTÜR SANAT VAKFI İKSU TIYATRO KOOPERATİFİ ERİŞİLEBİLİR BEN SENİ ZENGER

Festival Düzenleyicisi INO GAR ART Hey Mo TBWA FORGOOD

CANLI YAYINDA: netd müzik YouTube Türkiye #EvdeKal

**FESTTOGETHER
AT HOME MAY 9**

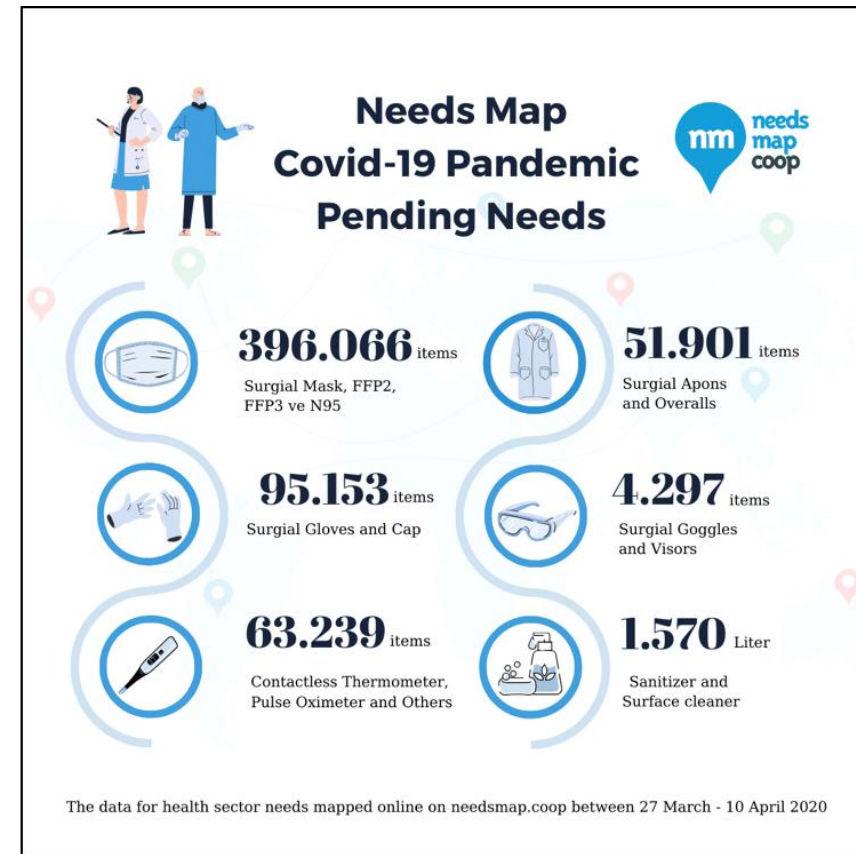
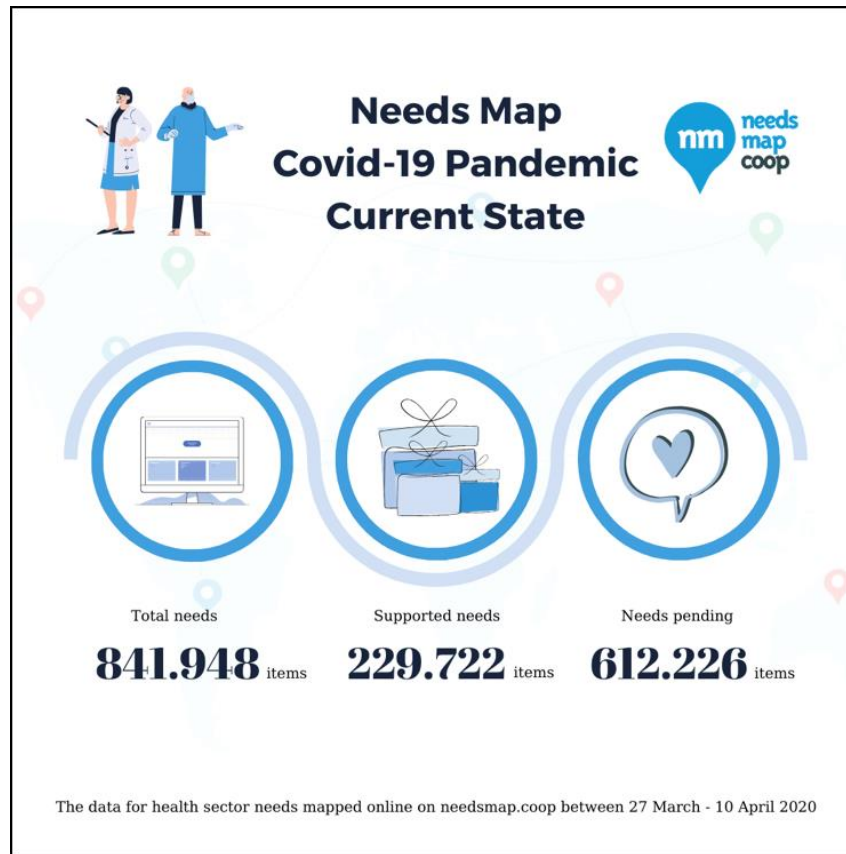
1.374.000
OF VIEWERS

12.450.000
OF VIEWS

343.791
OF NEEDS FUNDED

87.479
OF REMAINING NEEDS

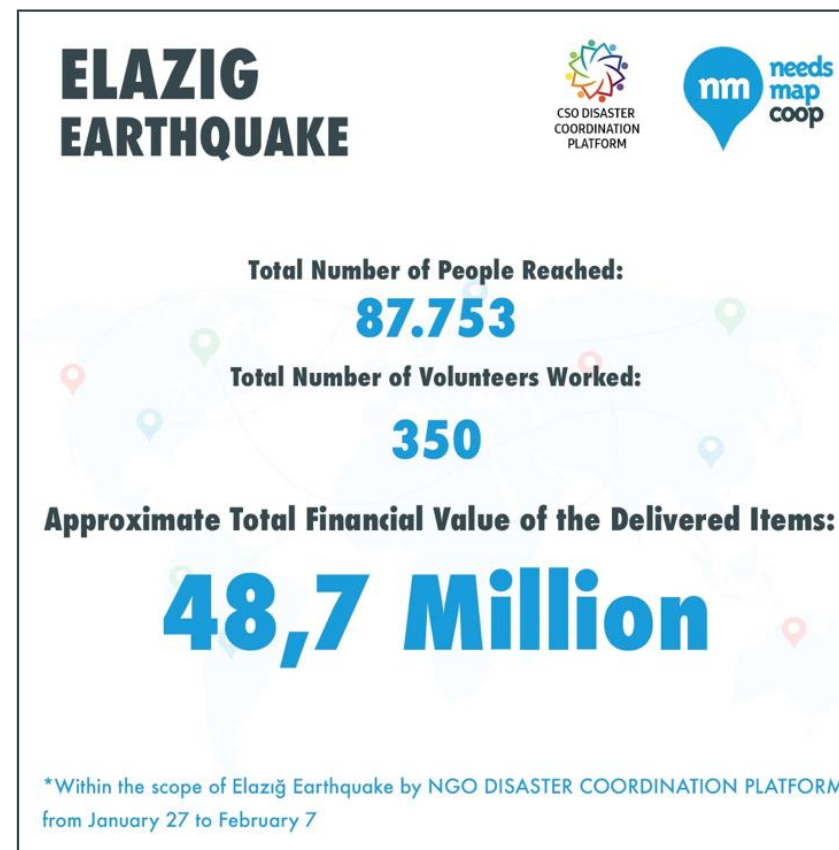
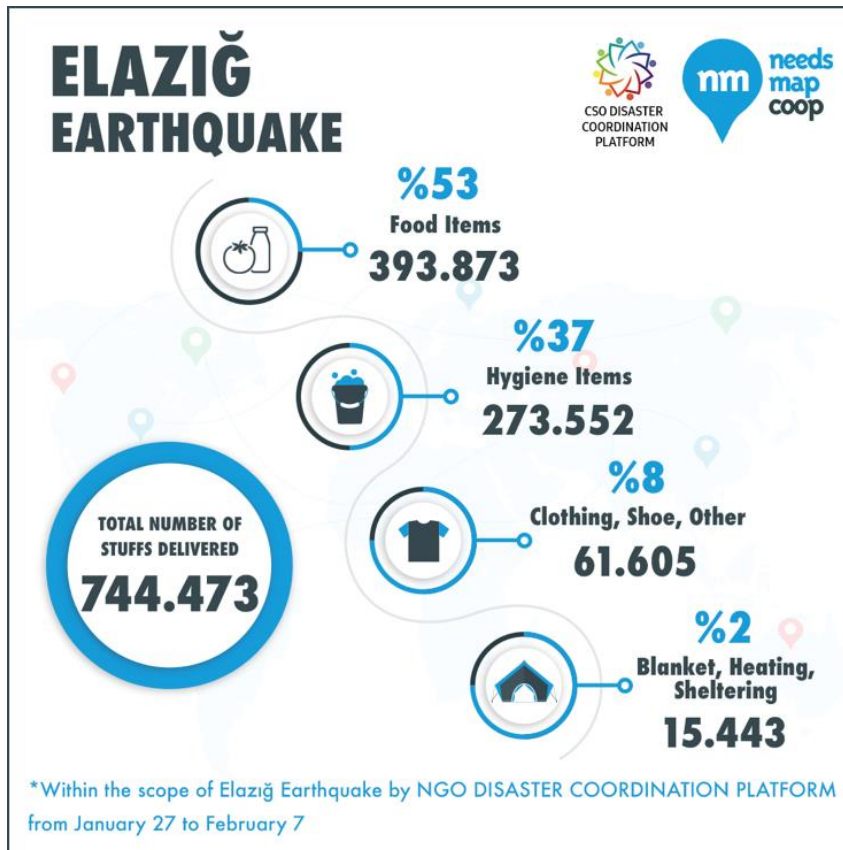
NEEDS MAP COVID19 RESPONSE



SUPPORT EDUCATION WITH A COMPUTER



ELAZIĞ DISASTER COORDINATION PLATFORM



NEEDS MAP AND CONTACTLESS AID DELIVERY



Disinfectant spraying activity at an internally displaced persons camp in Azaz, Syria, to prevent the spread of COVID-19. Photo by: REUTERS / Khalil Ashawi

Devex - For the global development community, COVID-19 poses big questions (By Raj Kumar / 01 April 2020)

<https://www.devex.com/news/for-the-global-development-community-covid-19-poses-big-questions-96899>



Contactless Aid
Delivery



Social Impact
Technology

INTERNATIONAL ACTIVITIES

The State of Platform Cooperativism Conference:
New York, USA

Asia Platform Cooperatives Summit: Best Practices Presentation
Hong Kong

Global Social Economy Forum (GSEF): Participants
Spain

Web Summit: Participants
Portugal

International School for Social Cooperatives: Best Practices Presentation
Turin, Italy

THANK YOU!



[/ihtiyacharitasi](#)



[/ihtiyacharitasiofficial](#)



[/ihtiyacharitasi](#)

www.ihtiyacharitasi.org

www.needsmap.coop

THE EVOLVING ECOSYSTEM OF SOCIAL AND SOLIDARITY ECONOMY IN THE POST COVID-19 ERA



Chris Dobrzanski

Board Chair

Community Forward Fund

COMMUNITY
FORWARD
FUND

Financing for charities and nonprofits

English: Please choose "Off" in the channel 한국어: "Korean"를 선택하십시오.

INITIATE RETHINK

WfH → Affordable Housing



Post pandemic awareness of affordable housing being both core and central to sustainable society. Requires rethink of business, jobs, in proximity to home vs commute to working place.

EXAMPLES OF AFFORDABLE HOUSING AT SCALE



- WESTAY Cooperative Housing Society
 - Namyangju, GyeongGi-Do, South Korea
 - 491 Units occupancy Aug. 2020
 - Community Centre
 - Values based invitation
 - 100 job creation in community
 - <http://westay.kr/>



- Fraserview Housing Cooperative
 - Vancouver, British Columbia, Canada
 - 420 Units Partial occupancy Aug. 2020
 - Community Land Trust
 - Affordability key feature
 - Integrated community via volunteering
 - <https://fraserviewcoop.ca/>

SOCIAL FINANCE: SOURCE OF SUSTAINABLE SSE

- Sustainability in face of disruption
 - Blending sources of finance
 - Prioritize program and mission
 - Immediate response
 - Patient Capital



- Fund helping hands
 - Flexibility
 - Forbearance
 - Defer debt

- Build deeper network
 - Share structure, portfolio
 - Recognize impact
 - Evaluate outcome
 - Solidify Social Economy





Thank You

- For more.....
chrisdобрzanski@shaw.ca

THE EVOLVING ECOSYSTEM OF SOCIAL AND SOLIDARITY ECONOMY IN THE POST COVID-19 ERA



YOUNGMI CHOI

REPRESENTATIVE, KOHWA



DIRECTOR/CHAIRMAN OF POLICY COMMITTEE, KFWC
STANDING DIRECTOR, PLATFORM FREELANCER WORKER COOPERATIVE CONFERENCE
MEMBER, NON-REGULAR COMMITTEE OF ECONOMY AND SOCIETY LABOR COMMITTEE
(FORMER) MEMBER OF STEERING COMMITTEE, KSENET
(FORMER) DIRECTOR/CHAIRMAN OF POLICY COMMITTEE, SEOUL COOP COUNCIL
(2019) RESEARCH FOR PROTECTION OF PLATFORM WORKERS THROUGH SOCIAL ECONOMY
(2019) RESEARCH FOR INSTITUTIONALIZATION OF A MODEL THAT CONVERTS A COMPANY ACQUIRED BY THE WORKERS INTO A COOPERATIVE
(2019) RESEARCH FOR VITALIZATION OF EMPLOYEE(WORKER) COOPERATIVE

EFFECT OF AND RESPONSE TO COVID-19

- Status of informal sector domestic workers in Korea
 - 200,000 to 400,000 women in their middle-to-old age are working as housekeepers, babysitters, etc.
 - They are excluded from the government's legal protection because they are regarded as atypical workers, and the numbers of migrant household workers and those who are engaged in platform labor are increasing.
- Effect of COVID-19
 - Decrease of existing work (20-30%), suspended supply of new work and intimidated household laborers.
 - Insufficient relief measures by the government: They are not receiving even the minimum level of relief, because they are regarded as producers, not as wage laborers; hard to receive the emergency employment support allowance; and the cooperatives are not subject to the small businesses support (shutdown benefits, shutdown leave allowance, etc.)
- Response to COVID-19
 - Provision of accurate information on COVID-19 to the members and promotion of reliability of the service to customers.
 - Temporary suspension of gatherings and meetings; conversion to individual consultation; and provision of essential training through on-line.
 - Policy proposal to the government based on factual survey and through Platform Freelancer Conference
 - "Endure" _ Because the basic characteristics of household labor is face-to-face home visit service, household labor has a fundamental limit as to how flexible it can be.

CHANGES TO THE SOCIAL SOLIDARITY ECONOMY ECOSYSTEM AFTER COVID-19

- “New Normal” is necessary in all areas of labor, environment and human rights. All persons and organizations must create new standards of life and work from their own perspectives.
- COVID-19 clearly showed that the situations of traditional atypical workers become much worse under the rapid deterioration and the social welfare system needs to be fundamentally changed.
- We must actively refer to public opinion how the social solidarity economy is responding to employment and unemployment; income gap; and expansion of social inequality, which are expected to be continued.
- The government must promote public care and job creation by public care simultaneously and advance reorganization of employment insurance and social welfare system which is currently being promoted.
- Seeking for the ways to actively use digital technology
- We need plans for those who have low accessibility to digital technology; difficulty in using digital technology; and difficulty in continuously upgrading the technology and the device.
- Development of infrastructure and various contents, such as conferences and trainings, to vitalize the concerned persons.
- Cooperative sharing platform to respond to the instability of platform labor.

ISSUES TO BE SOLVED TO DEVELOP THE NEW ECOSYSTEM

- Factual survey on the cooperatives of atypical workers (platform workers and freelancers) and institutionalization

(Example) The CICOPA Report in June 2020, 'NON-STANDARD AND PLATFORM WORKERS IN THE COVID-19 CRISIS'

- Institutionalization of workers' cooperative that includes various forms of labor, such as wage labor, etc.
- The government needs to actively seek for ways to enhance accessibility to digital technology, promote use of digital technology and enhance sustainability.
 - Need to provide digital devices to the vulnerable class, continuously support the vulnerable class with regard to digital technology and develop training programs and contents.
- Expansion of care service and cooperative sharing platform as the public service
 - Expansion of accessibility to the New Deal jobs of the government and the technology innovation projects of each government department for the social solidarity economy

Q&A



Join the discussion! You may leave your message in the “Chat” section.





GOBIERNO DE LA CIUDAD DE MÉXICO



GOBIERNO DE MÉXICO

BIENESTAR SECRETARÍA DE BIENESTAR

INAES INSTITUTO NACIONAL DE LA ECONOMÍA SOCIAL



MEXICO CITY 2021 GLOBAL SOCIAL ECONOMY FORUM

GSEF Global Virtual Forum

Great Challenges, Greater Solidarity:
Power of Community and SSE
as a path for transformation

October 19-23, 2020

Register now!

www.gsef2021.org



#GSEF2021

With the cooperation of:



You have a **story**
to **share?**

Global-SSE Video
Open Call

With the cooperation of:

 **Finanzgruppe**
Sparkassenstiftung für
internationale Kooperation

 **cooperación
alemana**
DEUTSCHE ZUSAMMENARBEITUNG

Virtual Forum towards

Gsef

MEXICO CITY 2021
GLOBAL SOCIAL
ECONOMY FORUM

Sign up to this **call** and **share** your
testimony with the **world** through a
video

Find the requirements at
gsef2021.org



For more information about GSEF, please visit our website
www.gsef-net.org

Or social media

<http://www.facebook.com/gsefofficial>

<https://www.linkedin.com/company/14555337/>



MEXICO CITY 2021
GLOBAL SOCIAL
ECONOMY FORUM